



TREASURER'S REPORT FOR FEBRUARY 2011

INCOME AND EXPENSES

BOOK SALE INCOME	Feb-11	F.Y. to Date
Booksale - Cubberley	18,323	101,583
Booksale - Downtown		
Booksale - ABE	0	
Booksale - Amazon	5,982	63,276
Booksale - Volunteers	822	3,174
Booksale - Other/Special	400	2,160
Booksale - PBA/Grote	888	4,352
Total Booksale Income	26,415	174,545

OTHER INCOME		
Fire Reimbursement		8,810
Contributions: Restricted	250	2,750
Contributions: Unrestricted	573	9,360
Interest and Dividends	652	6,106
Library Lovers Fund		120
Memberships (& Other Inc)	2,015	11,702
Total Other Income	3,490	38,849
Total Income	29,905	213,394

NORMAL EXPENSES	40,575	F.Y. to Date
Accounting		450
Advertising	432	3,510
Book Pickup	570	2,510
Cash Over/Under	2,734	2,734
Dues & Subs		36
Equipment (cash reg. Prtrs)		3,531
Grants Paid		
Fixtures/Furniture		
Insurance		500
Internet Expenses		
Janitorial Services	290	775
Licenses & Fees		
Meals and Snacks		1,767
Miscellaneous		165
Postage and Delivery	96	9,048
Printing and Reproduction		326
Professional Fees - Consult.	3,100	16,617
Book Pricing Consultation		
Remodel - JCC		
Rent	4,717	30,079
Repairs		
Security		
Supplies	208	7,433
Taxes		85
Telephone	163	1,067
Total Normal Expenses	12,310	80,633

EXTRAORDINARY EXPENSES		
Booksale Staff/movers		670
Cable Co-op Grant	22,844	26,981
Contributions - Lib.		105,848
Fire Expense	56,300	61,398
Moving - JCC Expenses		1,530
Total Extraordinary Expense	79,144	196,428
Total Expense	91,454	277,061

NET BOOK SALE INCOME	14,105	93,912
NET TOTAL INCOME	-61,549	-63,667

BALANCE SHEET

ASSETS

Addison Av. FCU	20,737
Addison Av. FCU Check.	15
Book Room Mgr Petty Cash	443
Book Sale Petty Cash	266
Borel CD #143 @ 3.01%	96,228
Borel Checking	45,483
Borel Money Market	1,307
Comerica Bank CD	37,735
Comerica Bank Checking	308
Luther Burbank S & L #1	102,935
Luther Burbank S & L #2	2,193
Luther Burbank S & L #3	147,393
Schwab Acct	65
SFCU Check Acct	1
Stanford Fed Cr Union #1	104,292
Stanford Fed Cr Union #2	126,627
Stanford Fed Cr Union #3	22,164
Investments Total	708,190
Accounts Receivable (est.)	2,498
Bulk Mail Fund	94
Undepreciated Furn./Equip.	1,736
Prepaid Rent	500
Total Assets	713,019

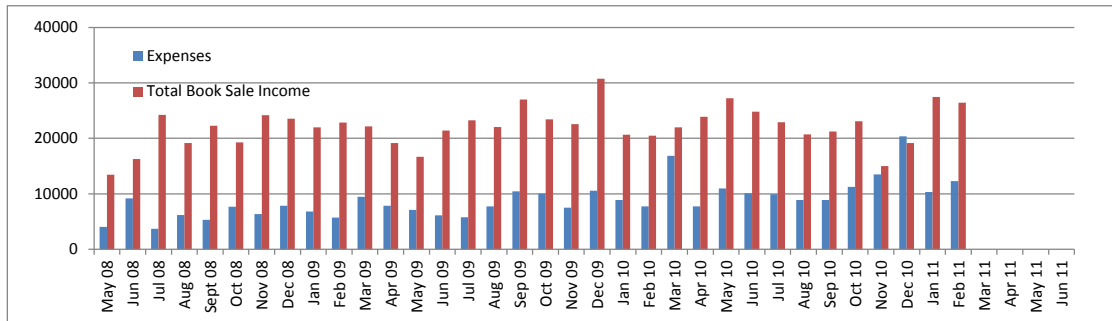
LIABILITIES

Rent Payable	2,523
Other Expenses Payable	1,500
Short-Term Grants Payable	170,326
LLF-Directed Contributions Payable	5,390
Cable Co-op Grants Payable	41,451
Long-term Grants Payable	100,000
Total Liabilities	321,190

NET ASSETS

Endowment Fund	210,024
Fund for the Future	80,651
Uncommitted Cable Co-op Grant	5,406
Uncommitted Library Lovers Fund	6,320
Uncommitted General Fund	83,321
Unallocated Interest	6,106
Total Net Assets	391,829

BOOKSALE INCOME AND EXPENSES



Short-Term Grants Payable

	Allocated	Spent	Unspent	% Unspent
2008-2009				
P21 Children, Teen Programs	26,142	25,842	300	1%
P23 Silicon Valley Reads	3,806	3,627	179	5%
Total Short-Term Grants Payable 2008-2009	750	524	226	30%
2009-2010				
C30 Collection Enhancement	67,000	67,000	0	0%
C31 Book Collection Enrichment	20,000	20,000	0	0%
C32 Online Resources	18,000	18,000	0	0%
C33 DVD	22,000	22,000	0	0%
C34 CT Collection Upgrade	3,280	3,280	0	0%
F30 College Terrace Display Shelving	8,120	0	8,120	100%
L30 Link+ 2009-2010	49,100	49,100	0	0%
P31 Children's and Teens' Programs	22,589	20,730	1,859	8%
P32 Adult Programs	6,936	7,936	-1,000	-14%
S30 Staff Appreciation	1,500	1,497	3	0%
Total Short-Term Grants Payable 2009-2010	218,525	209,543	8,982	4%
2010-2011				
C41 Collections; Book; Online	125,000	27,128	97,872	78%
C44 CT Collection Upgrade	28,280	9,354	18,926	67%
C46 DT Collection Upgrade	25,000	0	25,000	100%
P40 Libraries FF&E	100,000	100,000	0	0%
P41 Children's & Teens Programs	18,450	3,262	15,188	82%
P42 Adult Programs	5,350	1,644	3,706	69%
S40 Staff Appreciation	1,200	775	425	35%
Total Short-Term Grants Payable 2010-2011	303,280	142,162	161,118	53%
Total Short-Term Grants Payable	522,555	352,229	170,326	33%

LLF -Directed Contributions Payable

	Allocated	Spent	Unspent	% Unspent
D1 Terry Su LLF	1,000	738	261.55	26%
D2 C. Family Trust	3,000	1,704	1,295.81	43%
D3 M&M Trust	500	0	500.00	100%
D4 Dalal Fund	10,000	6,668	3,332.14	33%
Mitchell Park Library Fund Shelby Valentine	5,000	5,000	0.00	0%
Directed Contributions Payable	14,500	9,111	5,390	37%

Cable Co-op Payable

	Allocated	Spent	Unspent	% Unspent
Menlo Park	10,410	0	10,410	100%
Palo Alto Loaner Laptops	9,188	0	9,188	100%
Palo Alto Network Equipment	3,374	0	3,374	100%
Palo Alto Furniture	18,478	0	18,478	100%
Cable Co-op Payable	41,451	0	41,451	100%

Long-Term Grants Payable

	Allocated	Spent	Unspent	% Unspent
Link+ 2011-2012	50,000	0	50,000	100%
Link+ 2012-2113	50,000	0	50,000	100%
Total Long-term Grants Payable	100,000	0	100,000	100%