



TREASURER'S REPORT FOR JULY 2011

INCOME AND EXPENSES

BOOK SALE INCOME	F.Y. to	
	Jul-11	Date
Main Room	11,748	11,748
Children's Room	4,411	4,411
Bargain Room	2,461	2,461
Amazon	4,529	4,529
Pay Pal	1,904	1,904
Volunteers	572	572
Other/Special	0	0
PBA/Grote	1,526	1,526
Total Booksale Income	27,150	27,150

OTHER INCOME		
Fire Settlement	250	250
Contributions: Restricted/LLF	150	150
Contributions: Unrestricted	169	169
Interest and Dividends	1,363	1,363
Memberships (& Other Inc)	591	591
Total Other Income	2,523	2,523
TOTAL GROSS INCOME	29,674	29,674

BOOK SALE EXPENSE	F.Y. to	
	Jul-11	Date
Accounting	0	0
Advertising	369	369
Book Pickup	320	320
Cash Over/Under	0	0
Dues & Subs	0	0
Equipment (cash reg. Prtrs)	0	0
Fixtures/Furniture	0	0
Insurance	0	0
Internet Expenses	0	0
Janitorial Services	145	145
Licenses & Fees	81	81
Meals and Snacks	326	326
Miscellaneous	0	0
Postage and Delivery	1,192	1,192
Printing and Reproduction	153	153
Professional Fees - Consult.	2,158	2,158
Book Pricing Consultation	0	0
Rent	4,716	4,716
Repairs	0	0
Security	0	0
Supplies	283	283
Taxes	165	165
Telephone	134	134
TOTAL EXPENSE	10,042	10,042

NET BOOK SALE INCOME **17,109** **17,109**

NET TOTAL INCOME W/O GRANTS **19,632** **19,632**

GRANT EXPENSE		
General Grants Paid	55,827	55,827
LLF Directed Grants Paid	0	0
Cable Co-op Grants Paid	0	0
TOTAL GRANT PAYMENTS	55,827	55,827

TOTAL INCOME WITH GRANTS **-36,195** **-36,195**

BALANCE SHEET

ASSETS

1st Republic CD 228 @2.00 4/20/16	200,990
Addison Av. FCU Checking	15
Addison Av. FCU CD @.70 8/4/2012	20,816
Book Room Mgr Petty Cash	643
Book Sale Petty Cash	225
Borel Checking	27,158
Borel Money Market	1,309
Borel CD #143 @ .71 3/10/2012	98,382
Comerica Bank Checking	2,009
Luther Burbank Money Market	2,199
Luther Burbank CD 080-1 @1.10 4/25/2012	151,504
Schwab Acct	65
SFCU Check Acct	1
SFCU CD 777 @0.60 1/16/2012	14,427
SFCU CD 793 @1.25 6/16/2012	100,158
SFCU CD 587 @1.00 3/30/2012	104,780
Pay Pal Account	204
Investments Total	724,885

Accounts Receivable (est.)	0
Bulk Mail Fund	94
Undepreciated Furn./Equip.	2,755
Prepaid Rent	500
Total Assets	728,233

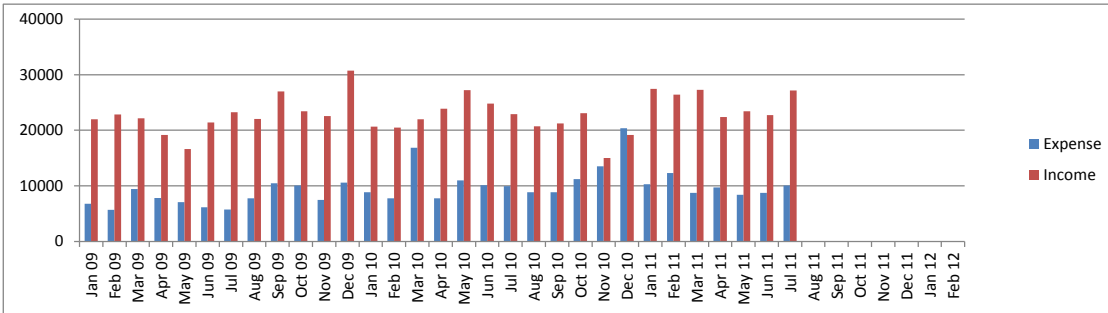
LIABILITIES

Rent Payable	0
Other Expenses Payable	0
Short-Term Grants Payable	318,728
LLF-Directed Contributions Payable	4,442
Cable Co-op Grants Payable	36,027
Total Liabilities	359,196

NET ASSETS

Uncommitted General Fund	60,658
Uncommitted Cable Co-op Grant	0
Uncommitted Library Lovers Fund	6,769
Endowment Fund	213,283
Fund for the Future	86,965
Unallocated Interest	1,363
Total Net Assets	369,037

BOOKSALE INCOME AND EXPENSES



General Grants Payable

	Month Adj*	Adj Grant**	Spent	Unspent	% Unspent
2010-2011					
C41 Collections; Book; Online		125,000	122,441	2,559	2%
C44 CT Collection Upgrade		28,280	23,688	4,592	16%
C46 DT Collection Upgrade		25,000	24,444	556	2%
P40 Libraries FF&E		100,000	100,000	0	0%
P41 Children's & Teens' Programs		18,450	18,190	260	1%
P42 Adult Programs	-6	5,244	4,491	754	14%
S40 Staff Appreciation	6	1,306	1,306	0	0%
Total General Grants Payable 2010-2011	0	303,280	294,559	8,721	3%
2011-2012					
	Month Adj	Adj Grant	Spent	Unspent	% Unspent
C51 General Collection Upgrade		179,500	0	179,500	100%
C52 DO and DT Col Upgrade		50,000	0	50,000	100%
C53 1Yr Movie License		1,225	1,225	0	0%
P51 Children's/Teen's Pgms		27,100	0	27,100	100%
P52 Adult Pgms		5,700	0	5,700	100%
P53 Supplies for Child/Teen Pgm		5,500	2,302	3,198	58%
S50 Staff Appreciation		1,400	64	1,336	95%
L50 Link+ 2011-2012		50,000	50,000	0	0%
L60 Link+ 2012-2113		50,000	6,828	43,172	86%
Total General Grants Payable 2011-2012	0	370,425	60,418	310,007	84%
Grand Total General Grants Payable	0	673705	354977	318728	47%

LLF -Directed Contribution Grants Payable

	Month Adj	Adj Grant	Spent	Unspent	% Unspent
D1 Terry Su LLF		1,000	979	21	2%
D2 C. Family Trust		3,000	1,704	1,296	43%
D3 Mashruwala & Majmundar Fund		750	363	387	52%
D4 Dalal Fund		10,000	7,262	2,738	27%
M P Library Fund Shelby Valentine		5,000	5,000	0	0%
Directed Contributions Payable	0	19,750	15,308	4,442	22%

Cable Co-op Grants Payable

	Month Adj	Adj Grant	Spent	Unspent	% Unspent
East Palo Alto E-Readers		4000	0	4,000	100%
Menlo Park		10,410	10,410	0	0%
Palo Alto Children's PC		1,406	0	1,406	100%
Palo Alto Loaner Laptops		9,188	0	9,188	100%
Palo Alto Network Equipment		3,374	0	3,374	100%
Palo Alto Furniture		18,478	420	18,058	98%
Cable Co-op Payable	0	46,857	10,830	36,027	77%

* Month Adj = Any adjustment made to the grant amount this month

** Adj Grant = Current Grant amount after any adjustments