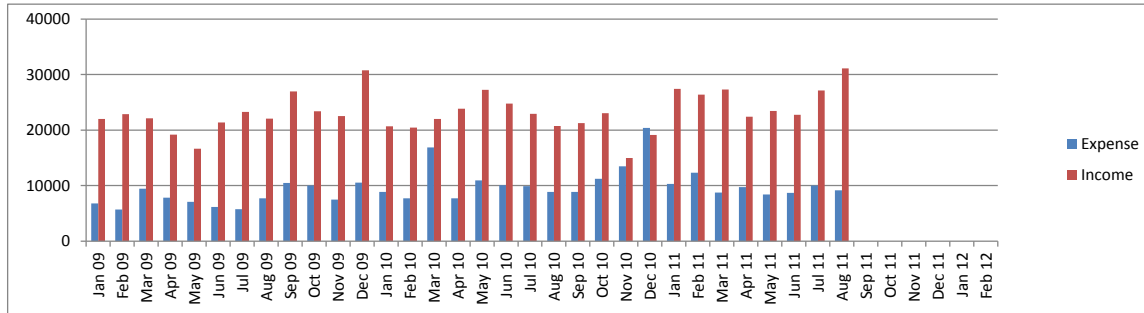


BOOKSALE INCOME AND EXPENSES



General Grants Payable

	Month Adj*	Adj Grant**	Spent	Unspent	% Unspent
2010-2011					
C41 Collections; Book; Online		125000.00	125006.87	-6.87	0%
C44 CT Collection Upgrade		28280.00	25604.19	2675.81	9%
C46 DT Collection Upgrade		25000.00	24999.83	0.17	0%
P40 Libraries FF&E		100000.00	100000.00	0.00	0%
P41 Children's & Teens' Programs		18450.00	18450.00	0.00	0%
P42 Adult Programs	-5.64	5244.36	4578.83	665.53	13%
S40 Staff Appreciation	5.64	1305.64	1305.64	0.00	0%
Total General Grants Payable 2010-2011	0.00	303280.00	299945.36	3334.64	1%
2011-2012					
	Month Adj	Adj Grant	Spent	Unspent	% Unspent
C51 General Collection Upgrade		179500.00	4653.00	174847.00	97%
C52 DO and DT Col Upgrade		50000.00	0.00	50000.00	100%
C53 1Yr Movie License		1225.00	1225.00	0.00	0%
P51 Children's/Teen's Pgms		27100.00	1815.99	25284.01	93%
P52 Adult Pgms		5700.00	100.00	5600.00	98%
P53 Supplies for Child/Teen Pgm		5500.00	2594.42	2905.58	53%
S50 Staff Appreciation		1400.00	86.48	1313.52	94%
L50 Link+ 2011-2012		50000.00	50000.00	0.00	0%
L60 Link+ 2012-2113		50000.00	6828.00	43172.00	86%
Total General Grants Payable 2011-2012	0.00	370425.00	67302.89	303122.11	82%
Grand Total General Grants Payable	0.00	673705.00	367248.25	306456.75	45%

LLF -Directed Contribution Grants Payable

	Month Adj	Adj Grant	Spent	Unspent	% Unspent
D1 Terry Su LLF		1000.00	989.55	10.45	1%
D2 C. Family Trust		3000.00	1994.71	1005.29	34%
D3 Mashruwala & Majmundar Fund	250.00	1000.00	489.09	510.91	51%
D4 Dalal Fund		10000.00	8246.79	1753.21	18%
Directed Contributions Payable	250.00	15000.00	11720.14	3279.86	22%

Cable Co-op Grants Payable

	Month Adj	Adj Grant	Spent	Unspent	% Unspent
East Palo Alto E-Readers		4000.00	0.00	4000.00	100%
Menlo Park		10410.36	10410.36	0.00	0%
Palo Alto Children's PC		1406.01	0.00	1406.01	100%
Palo Alto Loaner Laptops		9188.19	0.00	9188.19	100%
Palo Alto Network Equipment		3374.02	0.00	3374.02	100%
Palo Alto Furniture		18478.36	420.00	18058.36	98%
Cable Co-op Payable	0.00	46856.94	10830.36	36026.58	77%

* Month Adj = Any adjustment made to the grant amount this month

** Adj Grant = Current Grant amount after any adjustments