



TREASURER'S REPORT FOR SEPT 2011

INCOME AND EXPENSES

| | Sept 2011 | F.Y. to Date |
|------------------------------------|---------------|-----------------|
| BOOK SALE INCOME | | |
| Main Room | 11,441 | 35,052 |
| Children's Room | 3,916 | 12,601 |
| Bargain Room | 2,544 | 7,879 |
| Better Book Sale | 2,398 | 2,398 |
| Downtown Cash | 95 | 169 |
| Volunteers | 837 | 2,067 |
| PBA/Grote | 2,423 | 3,991 |
| Amazon/Internet | 7,108 | 22,394 |
| Pay Pal Receipts | 333 | 2,811 |
| Total Booksale Income | 31,093 | 89,363 |
| OTHER INCOME | | |
| Fire Settlement | 0 | 250 |
| Contributions: Restricted/LLF | 0 | 500 |
| Contributions: Unrestricted | 0 | 792 |
| Interest and Dividends | 346 | 2,066 |
| Memberships (& Other Inc) | 590 | 2,851 |
| Total Other Income | 936 | 6,460 |
| TOTAL GROSS INCOME | 32,030 | 95,822 |
| BOOK SALE EXPENSE | | |
| Accounting | 0 | 675 |
| Advertising | 369 | 1,107 |
| Book Pickup | 590 | 1,730 |
| Cash Over/Under | 0 | 0 |
| Dues & Subs | 0 | 0 |
| Equipment (cash reg. Prtrs) | 0 | 186 |
| Fixtures/Furniture | 0 | 0 |
| Insurance | 752 | 853 |
| Internet Expenses | 0 | 486 |
| Janitorial Services | 145 | 435 |
| Licenses & Fees | 38 | 194 |
| Meals and Snacks | 21 | 391 |
| Miscellaneous | 0 | 98 |
| Newsletter | 190 | 190 |
| Postage and Delivery | 2,420 | 3,612 |
| Printing and Reproduction | 0 | 153 |
| Professional Fees - Consult. | 1,600 | 5,358 |
| Book Pricing Consultation | 20 | 40 |
| Rent | 4,702 | 14,120 |
| Repairs | 0 | 0 |
| Security | 0 | 0 |
| Supplies | 687 | 1,461 |
| Taxes | 0 | 175 |
| Telephone | 140 | 413 |
| TOTAL EXPENSE | 11,675 | 31,677 |
| NET BOOK SALE INCOME | 19,419 | 57,686 |
| NET TOTAL INCOME W/O GRANTS | 20,355 | 64,145 |
| GRANT EXPENSES PAID | | |
| General Grants Paid | 1,436 | 69,884 |
| LLF Directed Grants Paid | 0 | 1,412 |
| Cable Co-op Grants Paid | 18,058 | 18,058 |
| TOTAL GRANT PAYMENTS | 19,494 | 89,354 |
| TOTAL INCOME WITH GRANTS | 860 | -25,209 |

BALANCE SHEET

ASSETS

| | |
|---|----------------|
| 1st Republic CD 228 @2.00 4/20/16 | 200,990 |
| Addison Av. FCU Checking | 15 |
| Addison Av. FCU CD @.70 8/4/2012 | 20,840 |
| Book Room Mgr Petty Cash | 533 |
| Book Sale Petty Cash | 253 |
| Borel Checking | 36,770 |
| Borel Money Market | 1,309 |
| Borel CD #143 @ .71 3/10/2012 | 98,382 |
| Comerica Bank Checking | 2,509 |
| Luther Burbank Money Market | 2,201 |
| Luther Burbank CD 080-1 @1.10 4/25/2012 | 151,782 |
| Schwab Acct | 65 |
| SFCU Check Acct | 1 |
| SFCU CD 777 @0.60 1/16/2012 | 14,442 |
| SFCU CD 793 @1.25 6/16/2012 | 100,367 |
| SFCU CD 587 @1.00 3/30/2012 | 104,956 |
| Pay Pal Account | 611 |
| Investments Total | 736,026 |
| Accounts Receivable (est.) | 0 |
| Bulk Mail Fund | 289 |
| Undepreciated Furn./Equip. | 2,755 |
| Prepaid Rent | 500 |
| Total Assets | 739,569 |

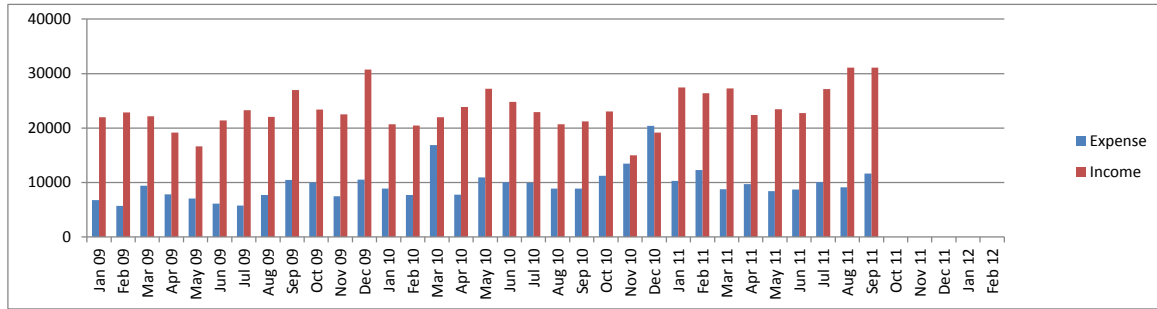
LIABILITIES

| | |
|------------------------------------|----------------|
| Rent Payable | 0 |
| Other Expenses Payable | 0 |
| Short-Term Grants Payable | 304,362 |
| LLF-Directed Contributions Payable | 3,280 |
| Cable Co-op Grants Payable | 17,968 |
| Total Liabilities | 325,610 |

NET ASSETS

| | |
|---------------------------------|----------------|
| Uncommitted General Fund | 103,122 |
| Uncommitted Cable Co-op Grant | 0 |
| Uncommitted Library Lovers Fund | 6,869 |
| Endowment Fund | 213,283 |
| Fund for the Future | 88,965 |
| Unallocated Interest | 1,720 |
| Total Net Assets | 413,959 |

BOOKSALE INCOME AND EXPENSES



General Grants Payable

| | Month Adj* | Adj Grant** | Spent | Unspent | % Unspent |
|---|---------------|----------------|----------------|----------------|------------|
| 2010-2011 | | | | | |
| C41 Collections; Book; Online | | 7 | 125,007 | 125,007 | 0% |
| C44 CT Collection Upgrade | -2,676 | | 25,604 | 25,604 | 0% |
| C46 DT Collection Upgrade | 0 | | 25,000 | 25,000 | 0% |
| P40 Libraries FF&E | | | 100,000 | 100,000 | 0% |
| P41 Children's & Teens' Programs | | | 18,450 | 18,450 | 0% |
| P42 Adult Programs | -666 | | 4,579 | 4,579 | 0% |
| S40 Staff Appreciation | | | 1,306 | 1,306 | 0% |
| Total General Grants Payable 2010-2011 | -3,335 | 299,945 | 299,945 | 0 | 0% |
| 2011-2012 | | | | | |
| | Month Adj | Adj Grant | Spent | Unspent | % Unspent |
| C51 General Collection Upgrade | | 179,500 | 4,653 | 174,847 | 97% |
| C52 DO and DT Col Upgrade | | 50,000 | 0 | 50,000 | 100% |
| C53 1Yr Movie License | | 1,225 | 1,225 | 0 | 0% |
| C54 CT Window Covers | 2,676 | 2,676 | 0 | 2,676 | 100% |
| P51 Children's/Teen's Pgms | | 27,100 | 2,921 | 24,179 | 89% |
| P52 Adult Pgms | | 5,700 | 100 | 5,600 | 98% |
| P53 Supplies for Child/Teen Pgm | | 5,500 | 2,902 | 2,598 | 47% |
| S50 Staff Appreciation | | 1,400 | 110 | 1,290 | 92% |
| L50 Link+ 2011-2012 | | 50,000 | 50,000 | 0 | 0% |
| L60 Link+ 2012-2113 | | 50,000 | 6,828 | 43,172 | 86% |
| Total General Grants Payable 2011-2012 | 2,676 | 373,101 | 68,739 | 304,362 | 82% |

LLF -Directed Contribution Grants Payable

| | Month Adj | Adj Grant | Spent | Unspent | % Unspent |
|---------------------------------------|------------|---------------|---------------|--------------|------------|
| D1 Terry Su LLF | | 1,000 | 990 | 10 | 1% |
| D2 C. Family Trust | | 3,000 | 1,995 | 1,005 | 34% |
| D3 Mashruwala & Majmundar Fund | 250 | 1,000 | 489 | 511 | 51% |
| D4 Dalal Fund | | 10,000 | 8,247 | 1,753 | 18% |
| Directed Contributions Payable | 250 | 15,000 | 11,720 | 3,280 | 22% |

Cable Co-op Grants Payable

| | Month Adj | Adj Grant | Spent | Unspent | % Unspent |
|-----------------------------|-----------|---------------|---------------|---------------|------------|
| East Palo Alto E-Readers | | 4,000 | 0 | 4,000 | 100% |
| Menlo Park | | 10,410 | 10,410 | 0 | 0% |
| Palo Alto Children's PC | | 1,406 | 0 | 1,406 | 100% |
| Palo Alto Loaner Laptops | | 9,188 | 0 | 9,188 | 100% |
| Palo Alto Network Equipment | | 3,374 | 0 | 3,374 | 100% |
| Palo Alto Furniture | 0 | 18,478 | 18,478 | 0 | 0% |
| Cable Co-op Payable | 0 | 46,857 | 28,889 | 17,968 | 38% |

* Month Adj = Any adjustment made to the grant amount this month

** Adj Grant = Current Grant amount after any adjustments