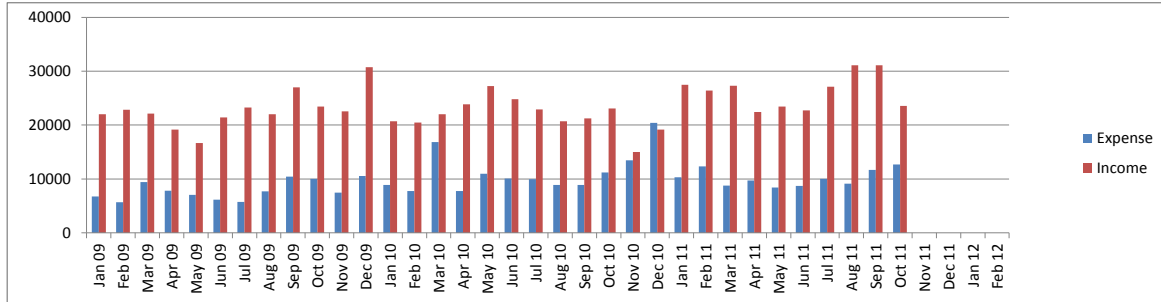




## BOOKSALE INCOME AND EXPENSES



### General Grants Payable

2011-2012	Month Adj	Adj Grant	Spent	Unspent	% Unspent
C51 General Collection Upgrade		179,500	8,253	171,247	95%
C52 DO and DT Col Upgrade		50,000	5,351	44,649	89%
C53 1Yr Movie License		1,225	1,225	0	0%
C54 CT Window Covers		2,676	0	2,676	100%
P51 Children's/Teen's Pgms		27,100	3,698	23,402	86%
P52 Adult Pgms		5,700	340	5,360	94%
P53 Supplies for Child/Teen Pgm		5,500	2,452	3,048	55%
S50 Staff Appreciation		1,400	110	1,290	92%
L50 Link+ 2011-2012		50,000	50,000	0	0%
L60 Link+ 2012-2113		50,000	6,828	43,172	86%
<b>Total General Grants Payable 2011-2012</b>	<b>0</b>	<b>373,101</b>	<b>78,257</b>	<b>294,844</b>	<b>79%</b>

### LLF -Directed Contribution Grants Payable

	Month Adj	Adj Grant	Spent	Unspent	% Unspent
D1 Terry Su LLF		1,000	990	10	1%
D2 C. Family Trust		3,000	1,995	1,005	34%
D3 Mashruwala & Majmunder Fund		1,000	489	511	51%
D4 Dalal Fund		10,000	8,247	1,753	18%
<b>Directed Contributions Payable</b>	<b>0</b>	<b>15,000</b>	<b>11,720</b>	<b>3,280</b>	<b>22%</b>

### Cable Co-op Grants Payable

	Month Adj	Adj Grant	Spent	Unspent	% Unspent
East Palo Alto E-Readers		4,000	0	4,000	100%
Menlo Park		10,410	10,410	0	0%
Palo Alto Children's PC		1,406	0	1,406	100%
Palo Alto Loaner Laptops		9,188	0	9,188	100%
Palo Alto Network Equipment		3,374	0	3,374	100%
Palo Alto Furniture	0	18,478	18,478	0	0%
<b>Cable Co-op Payable</b>	<b>0</b>	<b>46,857</b>	<b>28,889</b>	<b>17,968</b>	<b>38%</b>

\* Month Adj = Any adjustment made to the grant amount this month

\*\* Adj Grant = Current Grant amount after any adjustments