



TREASURER'S REPORT FOR DEC 2011

INCOME AND EXPENSES

	Dec-11	F.Y. to Date
BOOK SALE INCOME		
Main Room	9,613.84	67,961.35
Children's Room	3,453.84	22,610.84
Bargain Room	2,211.95	15,514.17
Better Book Sale	-	2,501.99
Downtown Cash	60.45	368.13
Volunteers	366.65	3,243.05
PBA/Grote	-	4,721.75
Amazon/Internet	6,046.79	40,135.53
Pay Pal Receipts	-	3,047.92
Total Booksale Income	21,753.52	160,104.73
OTHER INCOME		
Fire Settlement	-	250.00
Contributions: Restricted/LLF	1,000.00	1,500.00
Contributions: Unrestricted	200.00	1,141.71
Annual Appeal	4,165.00	4,165.00
Interest and Dividends	369.67	4,149.45
Memberships (& Other Inc)	2,446.25	7,082.70
Total Other Income	8,180.92	18,288.86
TOTAL GROSS INCOME	29,934.44	178,393.59
BOOK SALE EXPENSE		
	Dec-11	F.Y. to Date
Accounting		675.00
Advertising	600.30	2,588.66
Book Pickup	550.00	3,411.34
Cash Over/Under	-	(0.02)
Dues & Subs	-	-
Equipment (cash reg. Prtrs)	-	547.99
Fixtures/Furniture	-	-
Insurance	-	853.00
Internet Expenses	-	485.97
Janitorial Services	145.00	870.00
Licenses & Fees	14.12	182.97
Meals and Snacks	17.47	1,400.78
Miscellaneous	-	98.31
Newsletter	-	554.59
Postage and Delivery	1,755.97	6,404.14
Printing and Reproduction	217.59	591.71
Professional Fees - Consult.	1,600.00	11,482.02
Book Pricing Consultation	39.93	109.76
Rent	4,702.07	28,226.09
Repairs	-	-
Security	-	-
Supplies	1,596.81	4,426.43
Taxes	-	174.62
Telephone	142.73	836.15
TOTAL EXPENSE	11,381.99	63,919.51
NET BOOK SALE INCOME	10,371.53	96,185.22
NET TOTAL INCOME W/O GRANTS	18,552.45	114,474.08
GRANT EXPENSES PAID		
General Grants Paid	4,596.85	85,270.49
LLF Directed Grants Paid	-	1,411.98
Cable Co-op Grants Paid	4,000.00	22,058.16
TOTAL GRANT PAYMENTS	8,596.85	108,740.63
TOTAL INCOME WITH GRANTS	9,955.60	5,733.45

BALANCE SHEET

ASSETS

1st Republic CD 228 @2.00 4/20/16	201,995.26
First Tech FCU Checking	15.00
First Tech FCU CD @.70 8/4/2012	20,876.84
Book Room Mgr Petty Cash	133.04
Book Sale Petty Cash	200.86
Borel Checking	37,009.75
Borel Money Market	30,321.84
Borel CD #143 @ .71 3/10/2012	98,381.71
Comerica Bank Checking	3,108.61
Luther Burbank Money Market	2,204.61
Luther Burbank CD 080-1 @1.10 4/25/2012	152,201.15
Schwab Acct	65.28
SFCU Check Acct	1.00
SFCU CD 777 @0.60 1/16/2012	14,463.70
SFCU CD 793 @1.25 6/16/2012	100,683.51
SFCU CD 587 @1.00 3/30/2012	105,220.38
Pay Pal Account	247.92
Investments Total	767,130.46
Accounts Receivable (est.)	-
Bulk Mail Fund	176.43
Undepreciated Furn./Equip.	2,754.51
Prepaid Rent	500.00
Total Assets	770,561.40

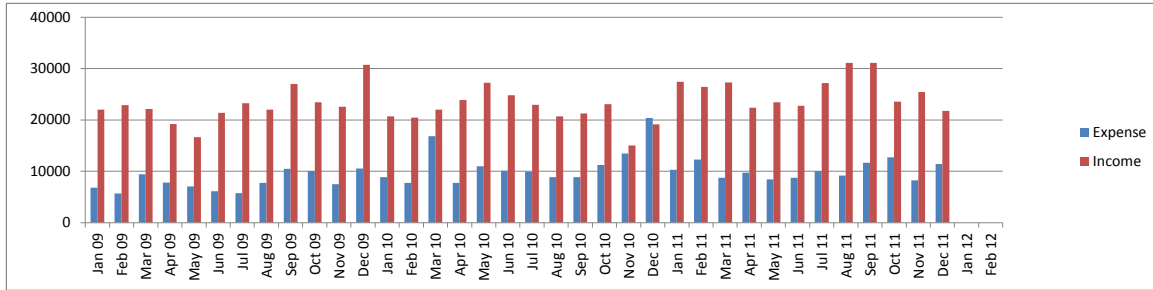
LIABILITIES

Rent Payable	-
Other Expenses Payable	-
Short-Term Grants Payable	288,975.21
LLF-Directed Contributions Payable	4,279.86
Cable Co-op Grants Payable	13,968.22
Total Liabilities	307,223.29

NET ASSETS

Uncommitted General Fund	142,406.76
Uncommitted Cable Co-op Grant	-
Uncommitted Library Lovers Fund	6,869.05
Endowment Fund	217,948.16
Fund for the Future	91,964.69
Unallocated Interest	4,149.45
Total Net Assets	463,338.11

BOOKSALE INCOME AND EXPENSES



General Grants Payable

2011-2012	Month Adj	Adj Grant	Spent	Unspent	% Unspent
C51 General Collection Upgrade		179,500.00	8,253.00	171,247.00	95%
C52 DO and DT Col Upgrade		50,000.00	5,350.62	44,649.38	89%
C53 1Yr Movie License		1,225.00	1,225.00	-	0%
C54 CT Window Covers		2,675.81	-	2,675.81	100%
P51 Children's/Teen's Pgms		27,100.00	7,916.87	19,183.13	71%
P52 Adult Pgms		5,700.00	1,050.47	4,649.53	82%
P53 Supplies for Child/Teen Pgm		5,500.00	2,475.68	3,024.32	55%
S50 Staff Appreciation		1,400.00	1,025.96	374.04	27%
L50 Link+ 2011-2012		50,000.00	50,000.00	-	0%
L60 Link+ 2012-2113		50,000.00	6,828.00	43,172.00	86%
Total General Grants Payable 2011-2012	-	373,100.81	84,125.60	288,975.21	77%

LLF-Directed Contribution Grants Payable

	Month Adj	Adj Grant	Spent	Unspent	% Unspent
D1 Terry Su LLF		1,000.00	989.55	10.45	1%
D2 C. Family Trust		3,000.00	1,994.71	1,005.29	34%
D3 Mashruwala & Majmundar Fund		1,000.00	489.09	510.91	51%
D4 Dalal Fund	1,000.00	11,000.00	8,246.79	2,753.21	25%
Directed Contributions Payable	1,000.00	16,000.00	11,720.14	4,279.86	27%

Cable Co-op Grants Payable

	Month Adj	Adj Grant	Spent	Unspent	% Unspent
East Palo Alto E-Readers		4,000.00	4,000.00	-	0%
Menlo Park		10,410.36	10,410.36	-	0%
Palo Alto Children's PC		1,406.01	-	1,406.01	100%
Palo Alto Loaner Laptops		9,188.19	-	9,188.19	100%
Palo Alto Network Equipment		3,374.02	-	3,374.02	100%
Palo Alto Furniture	-	18,478.16	18,478.16	-	0%
Cable Co-op Payable	-	46,856.74	32,888.52	13,968.22	30%

* Month Adj = Any adjustment made to the grant amount this month

** Adj Grant = Current Grant amount after any adjustments