



**TREASURER'S REPORT  
FOR AUGUST 2012**

**INCOME AND EXPENSES**

	Aug-12	F.Y. to Date
<b>BOOK SALE INCOME</b>		
Main Room	11,959.31	23,967.72
Children's Room	4,572.20	9,000.35
Bargain Room	3,643.18	6,829.26
Better Book Sale/ Vinyl Sale	22.00	22.00
Downtown Cash	95.56	227.20
Volunteers	392.25	815.55
PBA/Grote	40.00	2,734.50
Amazon/Internet	5,267.23	13,095.48
Pay Pal Receipts	181.35	482.03
<b>Total Booksale Income</b>	<b>26,173.08</b>	<b>57,174.09</b>
<b>OTHER INCOME</b>		
Contributions: Restricted/LLF	100.00	100.00
Contributions: Unrestricted	120.83	261.66
Annual Appeal	-	-
Interest and Dividends	182.21	1,386.93
Memberships (& Other Inc)	764.50	1,227.07
<b>Total Other Income</b>	<b>1,167.54</b>	<b>2,975.66</b>
<b>TOTAL GROSS INCOME</b>	<b>27,340.62</b>	<b>60,149.75</b>
<b>BOOK SALE EXPENSE</b>	Aug-12	F.Y. to Date
Accounting	695.00	695.00
Advertising	369.00	738.00
Book Pickup	219.01	319.01
Cash Over/Under	-	0.09
Dues & Subs	24.95	24.95
Equipment (cash reg. Prtrs)	-	128.97
Fixtures/Furniture	-	-
Insurance	-	-
Internet Expenses	800.00	1,687.47
Janitorial Services	145.00	290.00
Licenses & Fees	79.10	83.20
Meals and Snacks	619.37	619.37
Miscellaneous	-	-
Newsletter	299.37	299.37
Payroll Expense	10,004.17	15,655.68
Postage and Delivery	204.86	204.86
Printing and Reproduction	-	-
Professional Fees - Consult.	-	-
Book Pricing Consultation	-	-
Rent	5,311.96	10,484.87
Repairs	-	-
Security	-	-
Supplies	175.99	288.26
Taxes	10.00	184.41
Telephone	152.98	305.51
<b>TOTAL EXPENSE</b>	<b>19,110.76</b>	<b>32,009.02</b>
<b>NET BOOK SALE INCOME</b>	<b>7,062.32</b>	<b>25,165.07</b>
<b>NET TOTAL INC W/O GRANTS</b>	<b>8,229.86</b>	<b>28,140.73</b>
<b>GRANT/GIFT EXPENSES PAID</b>		
General Grants Paid	24,909.53	53,135.93
LLF Directed Grants Paid	241.83	241.83
Cable Co-op Grants Paid	-	-
Gift to Palo Alto Library Foundation	-	-
<b>TOTAL GRANT/GIFT PAYMENTS</b>	<b>25,151.36</b>	<b>53,377.76</b>
<b>CHANGE IN TOTAL ASSETS</b>	<b>(16,921.50)</b>	<b>(25,237.03)</b>

**BALANCE SHEET**

**ASSETS**

Borel Checking	32,603.45
Borel Money Market	31,378.75
1st Republic CD 228 @2.00 4/20/16	205,019.98
Comerica Bank Checking	5,086.45
Luther Burbank Money Market	2,210.16
Luther Burbank CD 080-1 @1.00 4/25/2013	173,261.71
SFCU Check Acct	16.00
SFCU CD 793 @0.60 6/16/2013	51,327.56
Schwab Acct	65.28
Pay Pal Account	88.44
Book Sale Petty Cash	232.97
Book Room Mgr Petty Cash	293.04
<b>Investments Total</b>	<b>501,583.79</b>
Accounts Receivable (est.)	-
Bulk Mail Fund	194.06
Undepreciated Furn./Equip.	2,016.51
Prepaid Rent	500.00
<b>Total Assets</b>	<b>504,294.36</b>

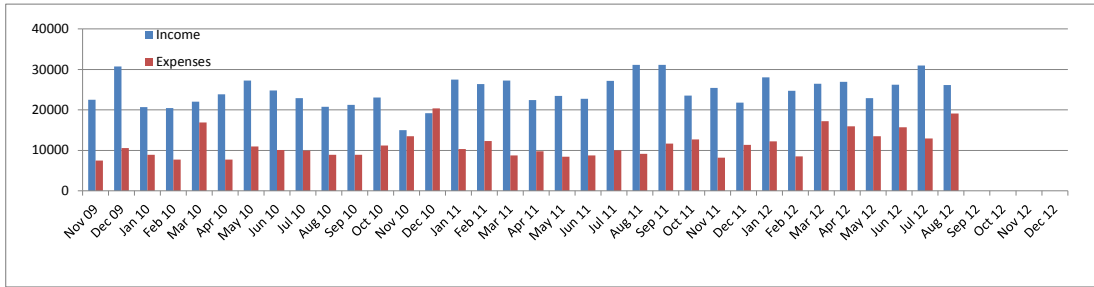
**LIABILITIES**

Rent Payable	-
Other Expenses Payable	-
General Grants Payable	201,092.71
LLF-Directed Contributions Payable	9,290.64
Cable Co-op Grants Payable	9,068.56
<b>Total Liabilities</b>	<b>219,451.91</b>

**EQUITY**

Uncommitted General Fund	50,353.49
Uncommitted Cable Co-op Grant	-
Uncommitted Library Lovers Fund	7,868.69
Endowment Fund	123,648.18
Fund for the Future	101,585.16
Unallocated Interest	1,386.93
<b>Fund Balances</b>	<b>284,842.45</b>
<b>Total Liabilities and Fund Balances</b>	<b>504,294.36</b>

## BOOKSALE INCOME AND EXPENSES



### General Grants Payable

	Month Adj	Adj Grant	Spent	Unspent	% Unspent
<b>2011-2012</b>					
C51 General Collection Upgrade	2,350.03	180,100.46	180,100.46	-	0%
C52 DO and DT Col Upgrade		51,709.16	51,709.16	-	0%
C53 1Yr Movie License		1,225.00	1,225.00	-	0%
C54 CT Window Covers	(2,675.81)	-	-	-	0%
P51 Children's/Teens Pgms	1,150.16	28,250.16	28,250.16	-	0%
P52 Adult Pgms	(126.21)	5,573.79	5,573.79	-	0%
P53 Supplies for Child/Teen Pgm	(250.48)	5,249.52	5,249.52	-	0%
S50 Staff Appreciation		1,440.41	1,440.41	-	0%
L50 Link+ 2011-2012		50,000.00	50,000.00	-	0%
<b>Total General Grants Payable 2011-2012</b>	<b>447.69</b>	<b>323,548.50</b>	<b>323,548.50</b>	<b>-</b>	<b>0%</b>
<b>2012-2013</b>					
C61 Leased Collection		150,000.00	-	150,000.00	100%
P62 Children's/Teens Programs	(447.69)	34,552.31	300.00	34,252.31	99%
P63 Adult Programs		11,000.00	265.57	10,734.43	98%
P64 Children's Teens Pgm Supplies		5,000.00	76.36	4,923.64	98%
S65 Staff Appreciation		1,400.00	217.67	1,182.33	84%
L60 Link+ 2012-2113		50,000.00	50,000.00	-	0%
<b>Total General Grants Payable 2012-2013</b>	<b>(447.69)</b>	<b>251,952.31</b>	<b>50,859.60</b>	<b>201,092.71</b>	<b>80%</b>

### LLF -Directed Contribution Grants Payable

	Month Adj	Adj Grant	Spent	Unspent	% Unspent
D1 Terry Su LLF		1,000.00	989.55	10.45	1%
D2 C. Family Trust		3,005.36	3,005.36	-	0%
D3 Mashruwala & Majmundar Fund		1,000.00	984.24	15.76	2%
D4 Dalal Fund		11,000.00	10,900.57	99.43	1%
D5 Burkoth Memorial Fund	100.00	9,165.00	-	9,165.00	100%
<b>Directed Contributions Payable</b>	<b>100.00</b>	<b>25,170.36</b>	<b>15,879.72</b>	<b>9,290.64</b>	<b>37%</b>

### Cable Co-op Grants Payable

	Month Adj	Adj Grant	Spent	Unspent	% Unspent
East Palo Alto E-Readers		4,000.00	4,000.00	-	0%
Menlo Park		10,410.36	10,410.36	-	0%
Palo Alto Children's PC		988.96	988.96	-	0%
Palo Alto Loaner Laptops	3,374.02	12,979.26	3,910.70	9,068.56	70%
Palo Alto Network Equipment	(3,374.02)	-	-	-	100%
Palo Alto Furniture	-	18,478.16	18,478.16	-	0%
<b>Cable Co-op Payable</b>	<b>-</b>	<b>46,856.74</b>	<b>37,788.18</b>	<b>9,068.56</b>	<b>19%</b>

\* Month Adj = Any adjustment made to the grant amount this month

\*\* Adj Grant = Current Grant amount after any adjustments