



## TREASURER'S REPORT FOR SEPTEMBER 2012

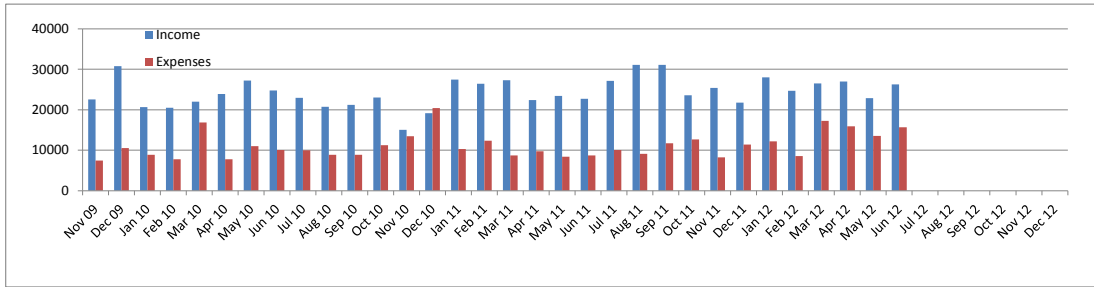
### INCOME AND EXPENSES

	Sep-12	F.Y. to Date
<b>BOOK SALE INCOME</b>		
Main Room	11,633.33	35,601.05
Children's Room	4,591.29	13,591.64
Bargain Room	3,157.88	9,987.14
Better Book Sale/ Vinyl Sale	30.00	52.00
Downtown Cash	182.29	409.49
Volunteers	404.80	1,220.35
PBA/Grote	-	2,734.50
Amazon/Internet	4,213.07	17,308.55
Pay Pal Receipts	-	482.03
<b>Total Booksale Income</b>	<b>24,212.66</b>	<b>81,386.75</b>
<b>OTHER INCOME</b>		
Contributions: Restricted/LLF	50.00	150.00
Contributions: Unrestricted	6.00	267.66
Annual Appeal	-	-
Interest and Dividends	175.63	1,562.56
Memberships (& Other Inc)	425.75	1,652.82
<b>Total Other Income</b>	<b>657.38</b>	<b>3,633.04</b>
<b>TOTAL GROSS INCOME</b>	<b>24,870.04</b>	<b>85,019.79</b>
<b>BOOK SALE EXPENSE</b>	Sep-12	F.Y. to Date
Accounting	-	695.00
Advertising	369.00	1,107.00
Book Pickup	-	319.01
Cash Over/Under	(0.20)	(0.11)
Dues & Subs	-	24.95
Equipment (cash reg. Prtrs)	500.00	628.97
Fixtures/Furniture	64.94	64.94
Insurance	-	-
Internet Expenses	963.93	2,651.40
Janitorial Services	-	290.00
Licenses & Fees	4.91	88.11
Meals and Snacks	1,069.11	1,688.48
Miscellaneous	-	-
Newsletter	-	299.37
Payroll Expense	5,538.67	21,194.35
Postage and Delivery	-	204.86
Printing and Reproduction	-	-
Professional Fees - Consult.	-	-
Book Pricing Consultation	-	-
Rent	5,311.96	15,796.83
Repairs	52.90	52.90
Security	-	-
Supplies	451.02	739.28
Taxes	-	184.41
Telephone	168.17	473.68
<b>TOTAL EXPENSE</b>	<b>14,494.41</b>	<b>46,503.43</b>
<b>NET BOOK SALE INCOME</b>	<b>9,718.25</b>	<b>34,883.32</b>
<b>NET TOTAL INC W/O GRANTS</b>	<b>10,375.63</b>	<b>38,516.36</b>
<b>GRANT/GIFT EXPENSES PAID</b>		
General Grants Paid	2,084.25	55,220.18
LLF Directed Grants Paid	-	241.83
Cable Co-op Grants Paid	2,430.00	2,430.00
Gift to Palo Alto Library Foundation	-	-
<b>TOTAL GRANT/GIFT PAYMENTS</b>	<b>4,514.25</b>	<b>57,892.01</b>
<b>CHANGE IN TOTAL ASSETS</b>	<b>5,861.38</b>	<b>(19,375.65)</b>

### BALANCE SHEET

<b>Assets</b>	
Borel Checking	38,336.76
Borel Money Market	31,385.20
1st Republic CD 228 @2.00 4/20/16	205,019.98
Comerica Bank Checking	5,086.45
Luther Burbank Money Market	2,210.71
Luther Burbank CD 080-1 @1.00 4/25/2013	173,403.26
SFCU Check Acct	16.00
SFCU CD 793 @0.60 6/16/2013	51,352.88
Schwab Acct	65.28
Pay Pal Account	88.44
Book Sale Petty Cash	187.17
Book Room Mgr Petty Cash	293.04
<b>Investments Total</b>	<b>507,445.17</b>
Accounts Receivable (est.)	-
Bulk Mail Fund	194.06
Undepreciated Furn./Equip.	2,016.51
Prepaid Rent	500.00
<b>Total Assets</b>	<b>510,155.74</b>
<b>Liabilities</b>	
Rent Payable	-
Other Expenses Payable	-
General Grants Payable	199,008.46
LLF-Directed Contributions Payable	9,340.64
Cable Co-op Grants Payable	6,638.56
<b>Total Liabilities</b>	<b>214,987.66</b>
<b>EQUITY</b>	
Uncommitted General Fund	59,503.49
Uncommitted Cable Co-op Grant	-
Uncommitted Library Lovers Fund	7,868.69
Endowment Fund	123,648.18
Fund for the Future	102,585.16
Unallocated Interest	1,562.56
<b>Fund Balances</b>	<b>295,168.08</b>
<b>Total Liabilities and Fund Balances</b>	<b>510,155.74</b>

## BOOKSALE INCOME AND EXPENSES



### General Grants Payable

2012-2013	Month Adj	Adj Grant	Spent	Unspent	% Unspent
C61 Leased Collection	(40,000.00)	110,000.00	-	110,000.00	100%
C62 General Collection Upgrade	40,000.00	40,000.00	-	40,000.00	100%
P62 Children's/Teens Programs	(447.69)	34,552.31	2,051.12	32,501.19	94%
P63 Adult Programs		11,000.00	527.64	10,472.36	95%
P64 Children's Teens Pgm Supplies		5,000.00	99.80	4,900.20	98%
S65 Staff Appreciation		1,400.00	265.29	1,134.71	81%
L60 Link+ 2012-2113		50,000.00	50,000.00	-	0%
<b>Total General Grants Payable 2012-2013</b>	<b>(447.69)</b>	<b>251,952.31</b>	<b>52,943.85</b>	<b>199,008.46</b>	<b>79%</b>

### LLF -Directed Contribution Grants Payable

	Month Adj	Adj Grant	Spent	Unspent	% Unspent
D1 Terry Su LLF		1,000.00	989.55	10.45	1%
D2 C. Family Trust		3,005.36	3,005.36	-	0%
D3 Mashruwala & Majmundar Fund		1,000.00	984.24	15.76	2%
D4 Dalal Fund		11,000.00	10,900.57	99.43	1%
D5 Burkoth Memorial Fund	50.00	9,215.00	-	9,215.00	100%
<b>Directed Contributions Payable</b>	<b>50.00</b>	<b>25,220.36</b>	<b>15,879.72</b>	<b>9,340.64</b>	<b>37%</b>

### Cable Co-op Grants Payable

	Month Adj	Adj Grant	Spent	Unspent	% Unspent
East Palo Alto E-Readers		4,000.00	4,000.00	-	0%
Menlo Park		10,410.36	10,410.36	-	0%
Palo Alto Children's PC		988.96	988.96	-	0%
Palo Alto Loaner Laptops	3,374.02	12,979.26	6,340.70	6,638.56	51%
Palo Alto Network Equipment	(3,374.02)	-	-	-	0%
Palo Alto Furniture	-	18,478.16	18,478.16	-	0%
<b>Cable Co-op Payable</b>	<b>-</b>	<b>46,856.74</b>	<b>40,218.18</b>	<b>6,638.56</b>	<b>14%</b>

\* Month Adj = Any adjustment made to the grant amount this month

\*\* Adj Grant = Current Grant amount after any adjustments